

GROUND LEVEL GLAZING CALCULATIONS

*measured between 2' and 12' from ground plane
 SQUARE FOOTAGE OF MEASURED AREA: 3,218 SF
 25% OF 3,218 SF: 804 SF
 SQUARE FOOTAGE OF GLAZING: 1,028 SF (32%)

- 16A: GLASS RAILING SYSTEM
- 16B: BALCONY
- 16C: PREFINISHED COLUMN COVER - COLOR #1
- 16D: PAINTED METAL PERGOLA - COLOR #1
- 16E: PREFINISHED MECHANICAL LOUVER
- 16F: PREFINISHED OVERHEAD DOOR
- 16G: WALL MOUNTED LIGHT FIXTURE

- 6A: ARCHITECTURAL PANEL SYSTEM - COLOR #1
- 6B: ARCHITECTURAL PANEL SYSTEM - COLOR #2
- 6C: ARCHITECTURAL PANEL SYSTEM - COLOR #3
- 6D: WOOD SIDING (BOARD SIDING) - COLOR #1
- 8A: PREFINISHED ALUMINUM STOREFRONT SYSTEM - COLOR #1
- 8B: FIBERGLASS OR COMPOSITE WINDOW/DOOR UNIT - COLOR #1
- 10A: PREFINISHED METAL CAP FLASHING - COLOR #1
- 10B: PREFINISHED METAL CAP FLASHING - COLOR #2

- 1A: MASONRY (BLEND) - COLOR #1
- 1B: MASONRY, STACKED SOLDIER COURSE (BLEND) - COLOR #1
- 1C: MASONRY - COLOR #2
- 2A: MASONRY - CAST STONE - COLOR #1
- 2B: MASONRY - CAST STONE - COLOR #2
- 2C: MASONRY - CAST STONE - COLOR #3
- 3A: ARCHITECTURAL PRECAST WITH 1A/1B MASONRY INLAY - COLOR #1
- 3B: ARCHITECTURAL PRECAST - COLOR #2



1 ELEVATION - SOUTH
 MPO.9 1/8" = 1'-0"

RESIDENTIAL BUILDING

900 Wayzata Blvd E
 Wayzata, MN



500 Washington Avenue South, Suite 1080
 Minneapolis, MN 55415
 p 612.339.5508 | f 612.339.5382
 www.esgarch.com

I hereby certify that this plan, specification, or report was prepared by me or under my direct supervision and that I am a duly licensed architect under the laws of the State of Minnesota

Signature _____
 Typed or Printed Name _____
 License # _____ Date _____

NOT FOR CONSTRUCTION

General Plan Submission

ORIGINAL ISSUE: 05/03/22

REVISIONS No.	Description	Date

220546

PROJECT NUMBER

Author _____
 DRAWN BY _____

Checker _____
 CHECKED BY _____

KEY PLAN

RESIDENTIAL BUILDING

RESIDENTIAL ELEVATION

MPO.9

RESIDENTIAL BUILDING

900 Wayzata Blvd E
Wayzata, MN



500 Washington Avenue South, Suite 1080
Minneapolis, MN 55415
p 612.339.5508 | f 612.339.5382
www.esgarch.com

I hereby certify that this plan, specification, or report was prepared by me or under my direct supervision and that I am a duly licensed architect under the laws of the State of Minnesota

Signature _____

Typed or Printed Name _____

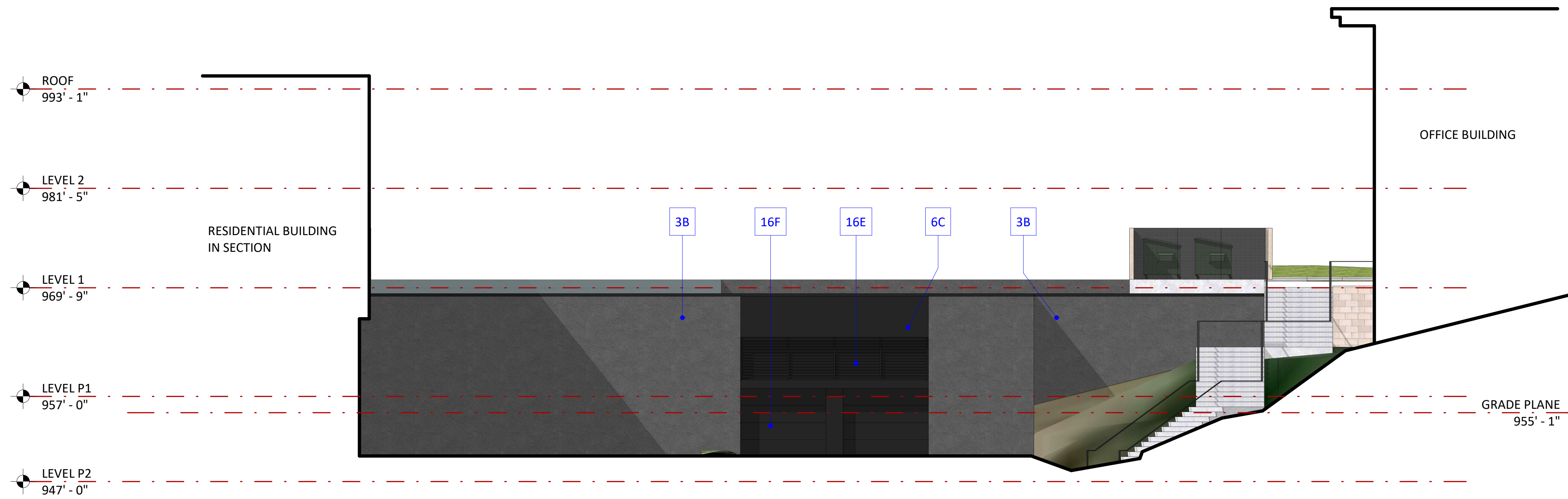
License # _____ Date _____

NOT FOR CONSTRUCTION

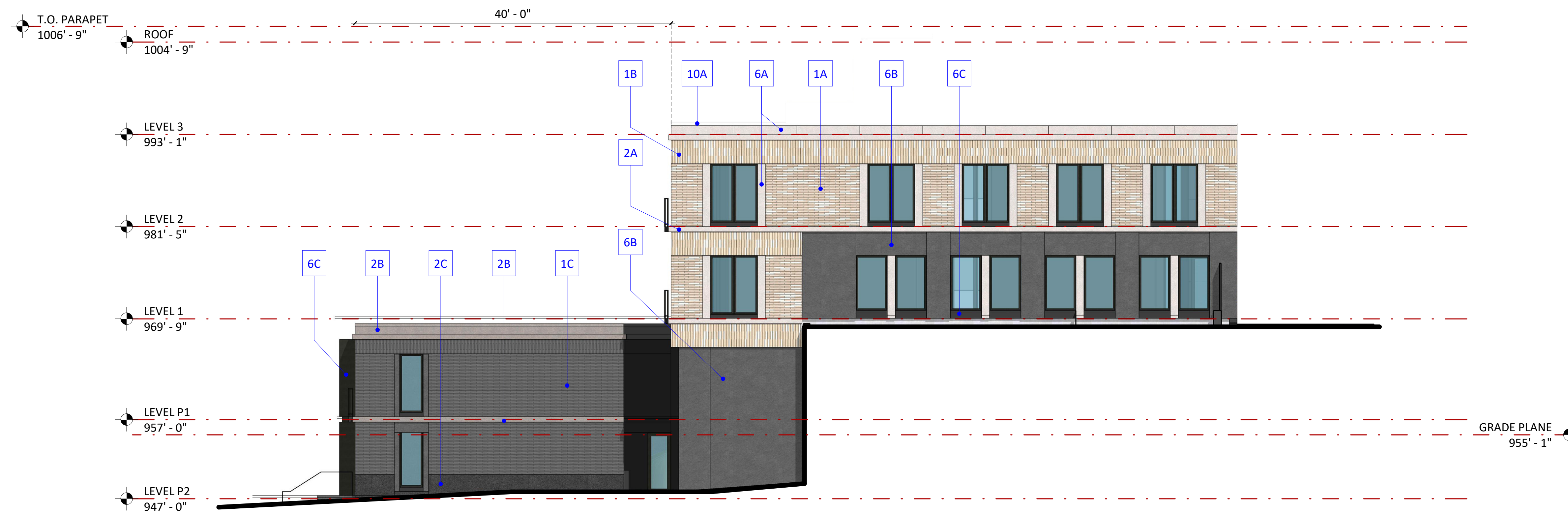
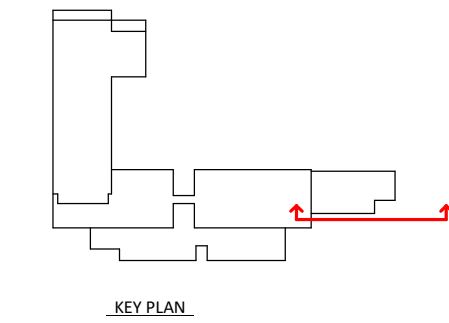
- 16A: GLASS RAILING SYSTEM
- 16B: BALCONY
- 16C: PREFINISHED COLUMN COVER - COLOR #1
- 16D: PAINTED METAL PERGOLA - COLOR #1
- 16E: PREFINISHED MECHANICAL LOUVER
- 16F: PREFINISHED OVERHEAD DOOR
- 16G: WALL MOUNTED LIGHT FIXTURE

- 6A: ARCHITECTURAL PANEL SYSTEM - COLOR #1
- 6B: ARCHITECTURAL PANEL SYSTEM - COLOR #2
- 6C: ARCHITECTURAL PANEL SYSTEM - COLOR #3
- 6D: WOOD SIDING (BOARD SIDING) - COLOR #1
- 8A: PREFINISHED ALUMINUM STOREFRONT SYSTEM - COLOR #1
- 8B: FIBERGLASS OR COMPOSITE WINDOW/DOOR UNIT - COLOR #1
- 10A: PREFINISHED METAL CAP FLASHING - COLOR #1
- 10B: PREFINISHED METAL CAP FLASHING - COLOR #2

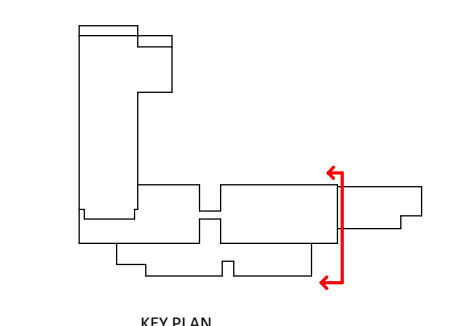
- 1A: MASONRY (BLEND) - COLOR #1
- 1B: MASONRY, STACKED SOLDIER COURSE (BLEND) - COLOR #1
- 1C: MASONRY - COLOR #2
- 2A: MASONRY - CAST STONE - COLOR #1
- 2B: MASONRY - CAST STONE - COLOR #2
- 2C: MASONRY - CAST STONE - COLOR #3
- 3A: ARCHITECTURAL PRECAST WITH 1A/1B MASONRY INLAY - COLOR #1
- 3B: ARCHITECTURAL PRECAST - COLOR #2



1 GARAGE ELEVATION - SOUTH
MP0.10 1/8" = 1'-0"



2 ELEVATION - EAST
MP0.10 1/8" = 1'-0"



5/10/2022 2:06:19 PM

General Plan Submission

ORIGINAL ISSUE: 05/03/22

Revisions	No.	Description	Date

220546
PROJECT NUMBER

Author _____ Checker _____
DRAWN BY _____ CHECKED BY _____

KEY PLAN

RESIDENTIAL BUILDING

RESIDENTIAL ELEVATION

MP0.10

RESIDENTIAL BUILDING

900 Wayzata Blvd E
Wayzata, MN



500 Washington Avenue South, Suite 1080
Minneapolis, MN 55415
p 612.339.5508 | f 612.339.5382
www.esgarch.com

I hereby certify that this plan, specification, or report was prepared by me or under my direct supervision and that I am a duly licensed architect under the laws of the State of Minnesota

Signature _____
Typed or Printed Name _____
License # _____ Date _____

NOT FOR CONSTRUCTION

General Plan Submission

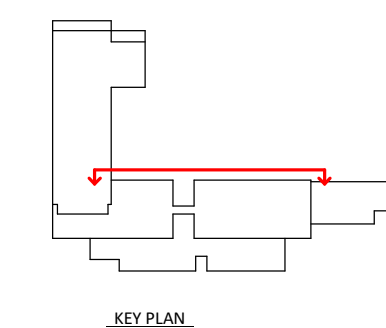
ORIGINAL ISSUE: 05/03/22

REVISIONS No.	Description	Date

220546
PROJECT NUMBER

Author _____ Checker _____
DRAWN BY _____ CHECKED BY _____

KEY PLAN



- 16A: GLASS RAILING SYSTEM
- 16B: BALCONY
- 16C: PREFINISHED COLUMN COVER - COLOR #1
- 16D: PAINTED METAL PERGOLA - COLOR #1
- 16E: PREFINISHED MECHANICAL LOUVER
- 16F: PREFINISHED OVERHEAD DOOR
- 16G: WALL MOUNTED LIGHT FIXTURE
- 6A: ARCHITECTURAL PANEL SYSTEM - COLOR #1
- 6B: ARCHITECTURAL PANEL SYSTEM - COLOR #2
- 6C: ARCHITECTURAL PANEL SYSTEM - COLOR #3
- 6D: WOOD SIDING (BOARD SIDING) - COLOR #1
- 8A: PREFINISHED ALUMINUM STOREFRONT SYSTEM - COLOR #1
- 8B: FIBERGLASS OR COMPOSITE WINDOW/DOOR UNIT - COLOR #1
- 10A: PREFINISHED METAL CAP FLASHING - COLOR #1
- 10B: PREFINISHED METAL CAP FLASHING - COLOR #2
- 1A: MASONRY (BLEND) - COLOR #1
- 1B: MASONRY, STACKED SOLDIER COURSE (BLEND) - COLOR #1
- 1C: MASONRY - COLOR #2
- 2A: MASONRY - CAST STONE - COLOR #1
- 2B: MASONRY - CAST STONE - COLOR #2
- 2C: MASONRY - CAST STONE - COLOR #3
- 3A: ARCHITECTURAL PRECAST WITH 1A/1B MASONRY INLAY - COLOR #1
- 3B: ARCHITECTURAL PRECAST - COLOR #2

GROUND LEVEL GLAZING CALCULATIONS

*measured between 2' and 12' from ground plane

SQUARE FOOTAGE OF MEASURED AREA:	2,463 SF
25% OF 2,463 SF:	615 SF
SQUARE FOOTAGE OF GLAZING:	769 SF (31%)



1 COURTYARD ELEVATION - NORTH
MP0.11 1/8" = 1'-0"

RESIDENTIAL BUILDING

RESIDENTIAL ELEVATION

MP0.11

RESIDENTIAL BUILDING

900 Wayzata Blvd E
Wayzata, MN



500 Washington Avenue South, Suite 1080
Minneapolis, MN 55415
p 612.339.5508 | f 612.339.5382
www.esgarch.com

I hereby certify that this plan, specification, or report was prepared by me or under my direct supervision and that I am a duly licensed architect under the laws of the State of Minnesota

Signature _____
Typed or Printed Name _____
License # _____ Date _____

NOT FOR CONSTRUCTION

General Plan Submission

ORIGINAL ISSUE: 05/04/22

REVISIONS No.	Description	Date

220546
PROJECT NUMBER

Author _____ Checker _____
DRAWN BY _____ CHECKED BY _____

KEY PLAN

RESIDENTIAL BUILDING

RESIDENTIAL ELEVATION

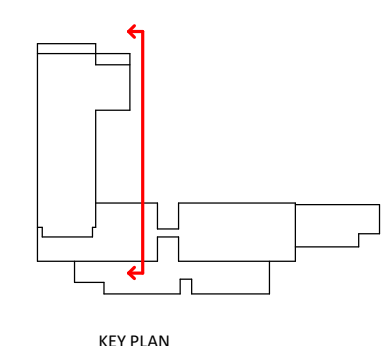
MP0.12

- 16A: GLASS RAILING SYSTEM
- 16B: BALCONY
- 16C: PREFINISHED COLUMN COVER - COLOR #1
- 16D: PAINTED METAL PERGOLA - COLOR #1
- 16E: PREFINISHED MECHANICAL LOUVER
- 16F: PREFINISHED OVERHEAD DOOR
- 16G: WALL MOUNTED LIGHT FIXTURE
- 6A: ARCHITECTURAL PANEL SYSTEM - COLOR #1
- 6B: ARCHITECTURAL PANEL SYSTEM - COLOR #2
- 6C: ARCHITECTURAL PANEL SYSTEM - COLOR #3
- 6D: WOOD SIDING (BOARD SIDING) - COLOR #1
- 8A: PREFINISHED ALUMINUM STOREFRONT SYSTEM - COLOR #1
- 8B: FIBERGLASS OR COMPOSITE WINDOW/DOOR UNIT - COLOR #1
- 10A: PREFINISHED METAL CAP FLASHING - COLOR #1
- 10B: PREFINISHED METAL CAP FLASHING - COLOR #2
- 1A: MASONRY (BLEND) - COLOR #1
- 1B: MASONRY, STACKED SOLDIER COURSE (BLEND) - COLOR #1
- 1C: MASONRY - COLOR #2
- 2A: MASONRY - CAST STONE - COLOR #1
- 2B: MASONRY - CAST STONE - COLOR #2
- 2C: MASONRY - CAST STONE - COLOR #3
- 3A: ARCHITECTURAL PRECAST WITH 1A/1B MASONRY INLAY - COLOR #1
- 3B: ARCHITECTURAL PRECAST - COLOR #2

GROUND LEVEL GLAZING CALCULATIONS
*measured between 2" and 12" from ground plane
SQUARE FOOTAGE OF MEASURED AREA: 1,956 SF
25% OF 1,956 SF: 489 SF
SQUARE FOOTAGE OF GLAZING: 858 SF (43%)



1 COURTYARD ELEVATION - EAST
MP0.12 1/8" = 1'-0"



GROUND LEVEL GLAZING CALCULATIONS

*measured between 2' and 12' from ground plane

SQUARE FOOTAGE OF MEASURED AREA: 1,125 SF
 25% OF 1,125 SF: 281 SF
 SQUARE FOOTAGE OF GLAZING: 305 SF (27%)

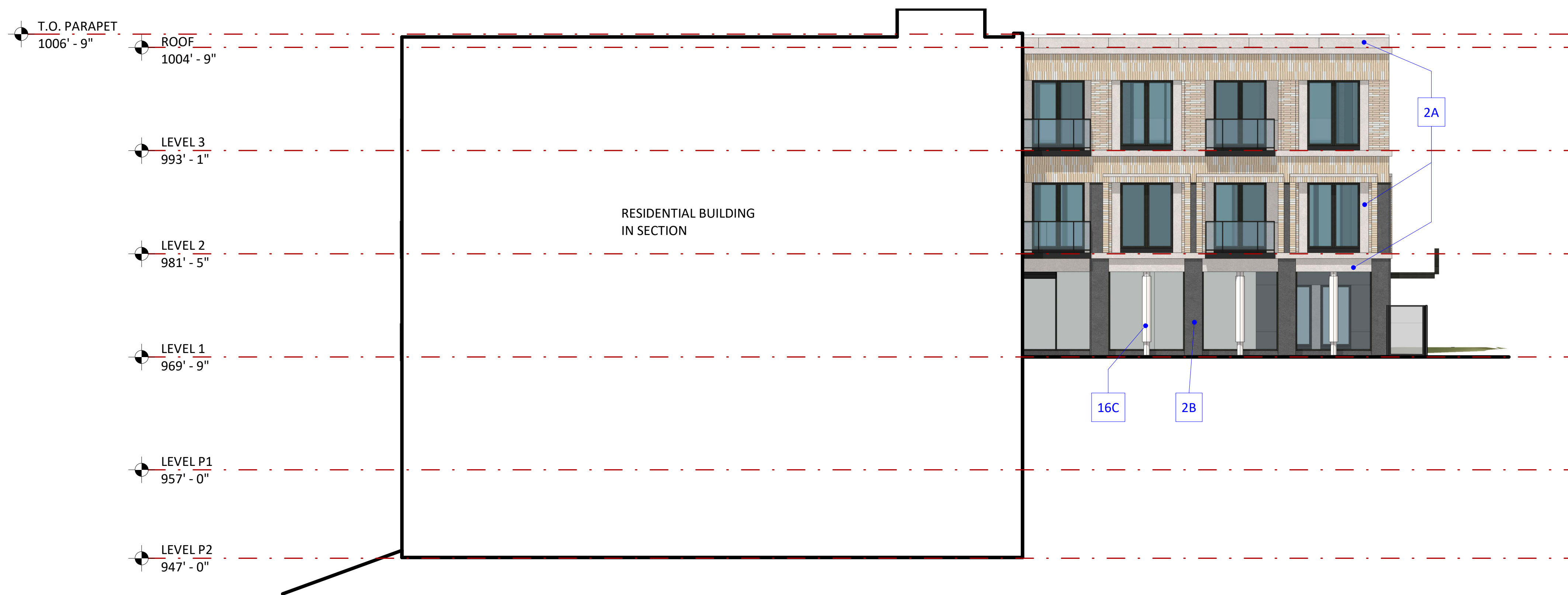
- 16A: GLASS RAILING SYSTEM
- 16B: BALCONY
- 16C: PREFINISHED COLUMN COVER - COLOR #1
- 16D: PAINTED METAL PERGOLA - COLOR #1
- 16E: PREFINISHED MECHANICAL LOUVER
- 16F: PREFINISHED OVERHEAD DOOR
- 16G: WALL MOUNTED LIGHT FIXTURE

- 6A: ARCHITECTURAL PANEL SYSTEM - COLOR #1
- 6B: ARCHITECTURAL PANEL SYSTEM - COLOR #2
- 6C: ARCHITECTURAL PANEL SYSTEM - COLOR #3
- 6D: WOOD SIDING (BOARD SIDING) - COLOR #1
- 8A: PREFINISHED ALUMINUM STOREFRONT SYSTEM - COLOR #1
- 8B: FIBERGLASS OR COMPOSITE WINDOW/DOOR UNIT - COLOR #1
- 10A: PREFINISHED METAL CAP FLASHING - COLOR #1
- 10B: PREFINISHED METAL CAP FLASHING - COLOR #2

- 1A: MASONRY (BLEND) - COLOR #1
- 1B: MASONRY, STACKED SOLDIER COURSE (BLEND) - COLOR #1
- 1C: MASONRY - COLOR #2
- 2A: MASONRY - CAST STONE - COLOR #1
- 2B: MASONRY - CAST STONE - COLOR #2
- 2C: MASONRY - CAST STONE - COLOR #3
- 3A: ARCHITECTURAL PRECAST WITH 1A/1B MASONRY INLAY - COLOR #1
- 3B: ARCHITECTURAL PRECAST - COLOR #2



2 ELEVATION - NORTH
 MP0.13 1/8" = 1'-0"



1 COURTYARD ELEVATION - SOUTH
 MP0.13 1/8" = 1'-0"

RESIDENTIAL BUILDING

900 Wayzata Blvd E
 Wayzata, MN



500 Washington Avenue South, Suite 1080
 Minneapolis, MN 55415
 p 612.339.5508 | f 612.339.5382
 www.esgarch.com

I hereby certify that this plan, specification, or report was prepared by me or under my direct supervision and that I am a duly licensed architect under the laws of the State of Minnesota

Signature _____
 Typed or Printed Name _____
 License # _____ Date _____

NOT FOR CONSTRUCTION

General Plan Submission

ORIGINAL ISSUE: 05/04/22

REVISIONS No.	Description	Date

220546
 PROJECT NUMBER

Author _____
 DRAWN BY CHECKED BY

KEY PLAN

RESIDENTIAL BUILDING

RESIDENTIAL ELEVATION

MP0.13

RESIDENTIAL BUILDING

900 Wayzata Blvd E
Wayzata, MN



500 Washington Avenue South, Suite 1080
Minneapolis, MN 55415
p 612.339.5508 | f 612.339.5382
www.esgarch.com

I hereby certify that this plan, specification, or report was prepared by me or under my direct supervision and that I am a duly licensed architect under the laws of the State of Minnesota

Signature _____
Typed or Printed Name _____
License # _____ Date _____

NOT FOR CONSTRUCTION

General Plan Submission

ORIGINAL ISSUE: 05/05/22

REVISIONS No.	Description	Date

220546
PROJECT NUMBER

Author DRAWN BY	Checker CHECKED BY
--------------------	-----------------------

KEY PLAN

RESIDENTIAL BUILDING

RESIDENTIAL ELEVATION

MP0.14

- 16A: GLASS RAILING SYSTEM
- 16B: BALCONY
- 16C: PREFINISHED COLUMN COVER - COLOR #1
- 16D: PAINTED METAL PERGOLA - COLOR #1
- 16E: PREFINISHED MECHANICAL LOUVER
- 16F: PREFINISHED OVERHEAD DOOR
- 16G: WALL MOUNTED LIGHT FIXTURE
- 6A: ARCHITECTURAL PANEL SYSTEM - COLOR #1
- 6B: ARCHITECTURAL PANEL SYSTEM - COLOR #2
- 6C: ARCHITECTURAL PANEL SYSTEM - COLOR #3
- 6D: WOOD SIDING (BOARD SIDING) - COLOR #1
- 8A: PREFINISHED ALUMINUM STOREFRONT SYSTEM - COLOR #1
- 8B: FIBERGLASS OR COMPOSITE WINDOW/DOOR UNIT - COLOR #1
- 10A: PREFINISHED METAL CAP FLASHING - COLOR #1
- 10B: PREFINISHED METAL CAP FLASHING - COLOR #2

- 1A: MASONRY (BLEND) - COLOR #1
- 1B: MASONRY, STACKED SOLDIER COURSE (BLEND) - COLOR #1
- 1C: MASONRY - COLOR #2
- 2A: MASONRY - CAST STONE - COLOR #1
- 2B: MASONRY - CAST STONE - COLOR #2
- 2C: MASONRY - CAST STONE - COLOR #3
- 3A: ARCHITECTURAL PRECAST WITH 1A/1B MASONRY INLAY - COLOR #1
- 3B: ARCHITECTURAL PRECAST - COLOR #2



1 ELEVATION - WEST
MP0.14 1/8" = 1'-0"

5/10/2022 2:06:27 PM